

**Mohamad Izzat Aziz (981030087305)**  
**Manual**

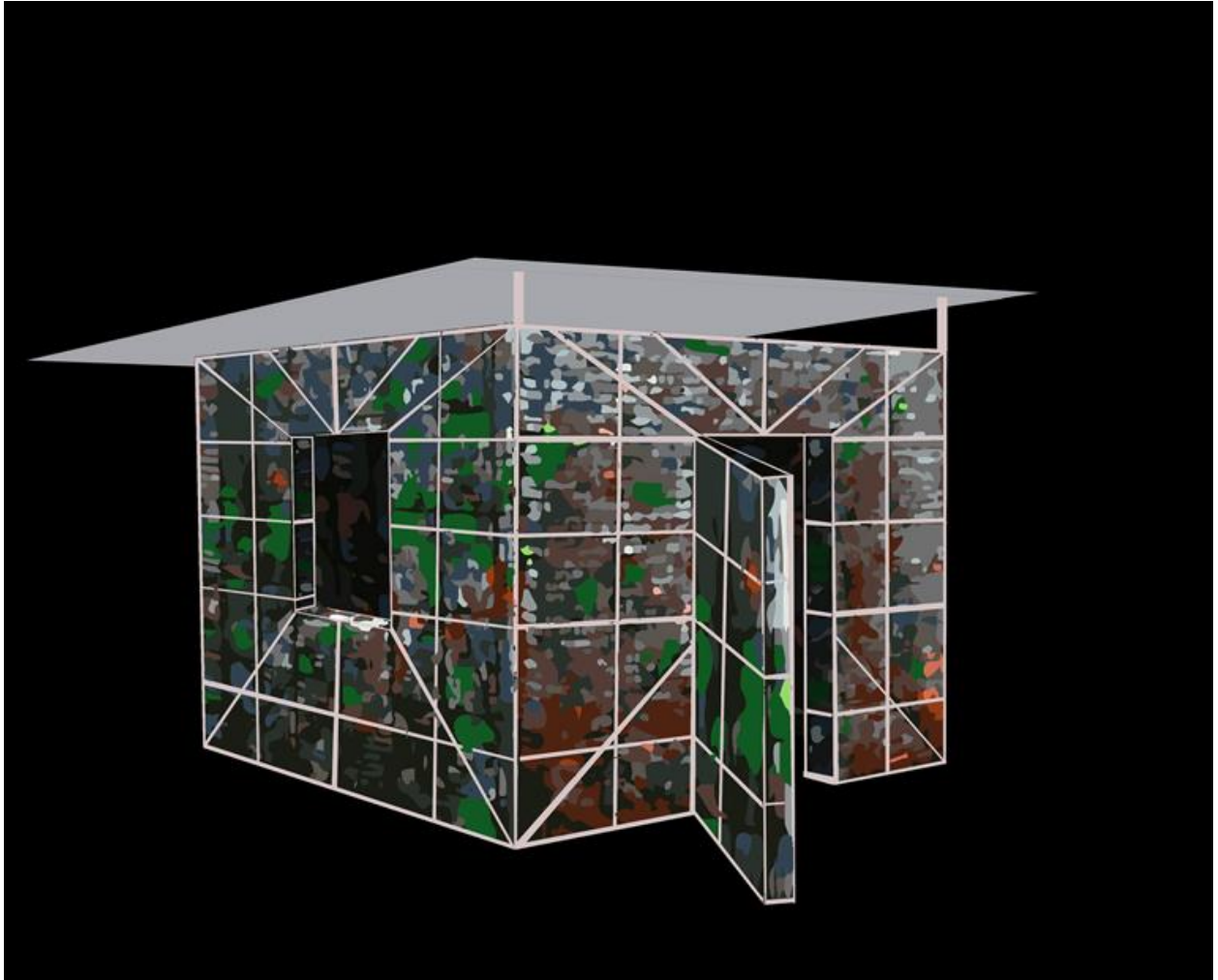


Image 3: The visual representation of the actual artwork that will be produced.

Izzat Aziz  
8 x 8 x 9 ft  
Eco-brick Environmental Hub  
2021

### 1.3 Detail of new artwork to be actualized

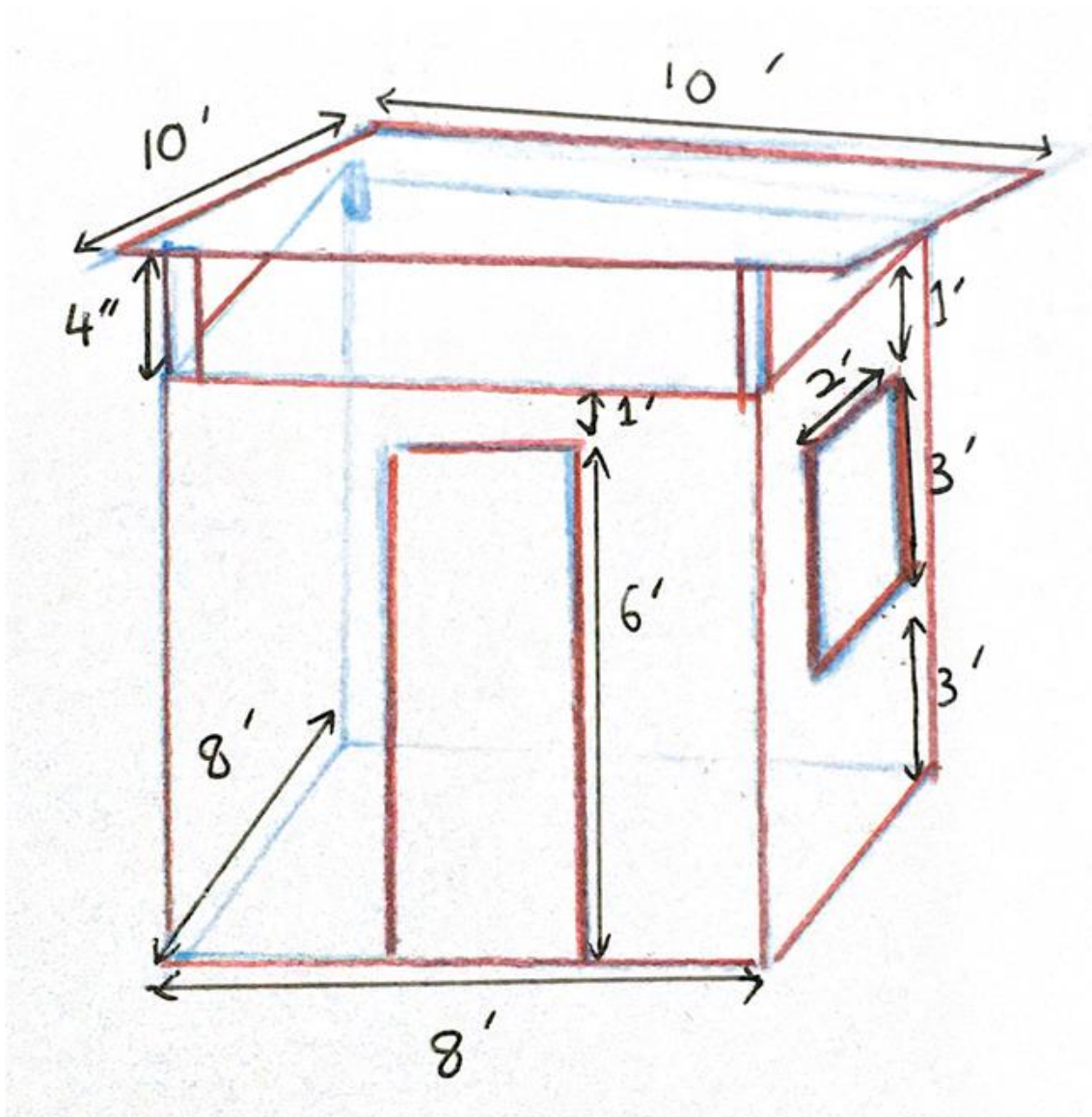


Image 4: A schematic of the artwork's size.

Based on image 4, depicts the size of the artwork that will be used. The symbol (') stands for feet, while the symbol (") stands for inches.

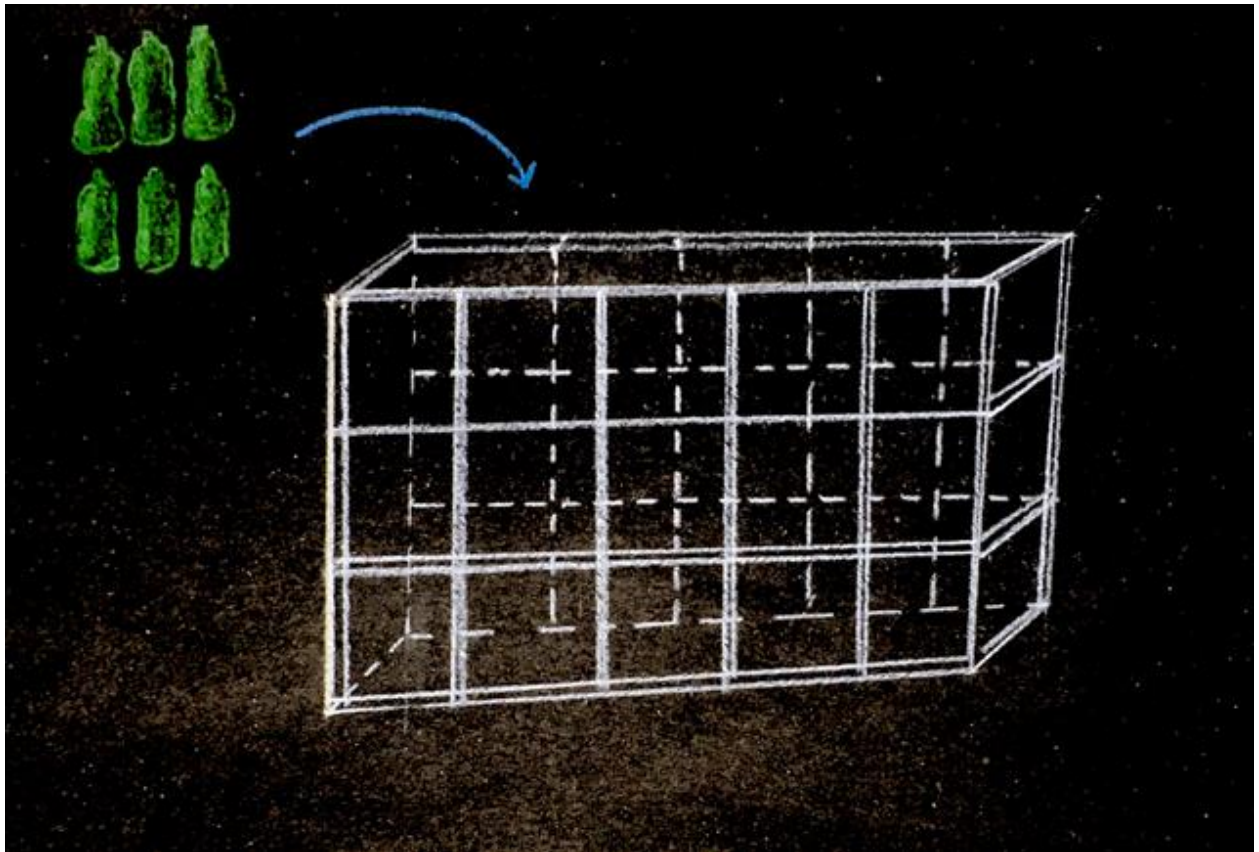


Image 5: A drawing of finished iron frame.

Image 5 depicts the iron frame after it has been finished. The next step is to place the plastic bottles as a brick into the iron frame.

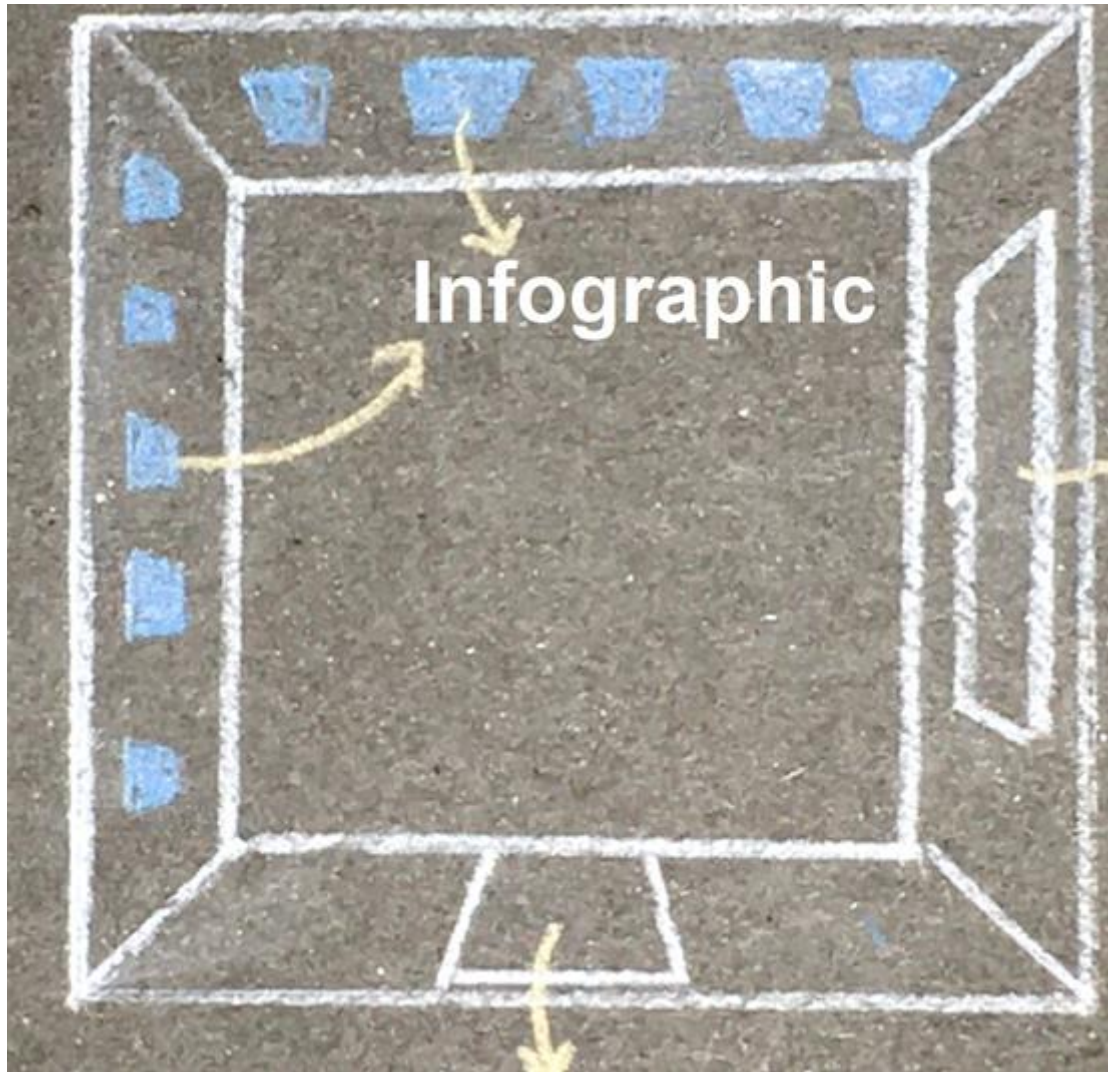


Image 6: the artwork's interior design.

The infographic will be displayed on the inside of the building (refer to image 6). Thus, the information will be relevant to environmental topics such as waste production, plastic pollution, and others. Some of the communities where I will gather information for the infographic are Trash Hero Ipoh, Percha Artspace, and Aktivis Sahabat Alam. In other words, this artwork serves as a hub for the public to discover the environmental topic, whom to contact for information, or to participate in any environmental activity.



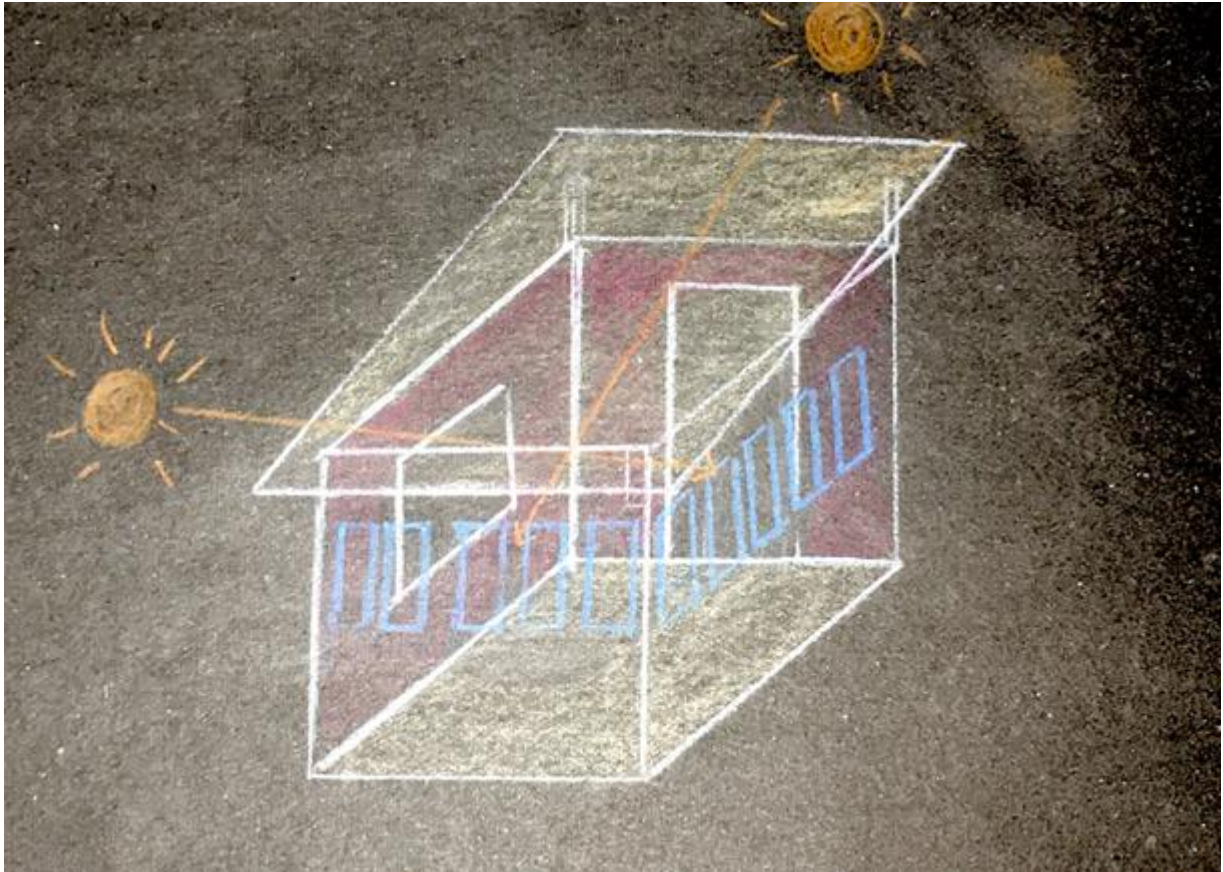


Image 6: back view of the artwork.

Image 7 depicts the space for natural light to enter the building. In other words, the structure's design allows natural light to enter from the outside.

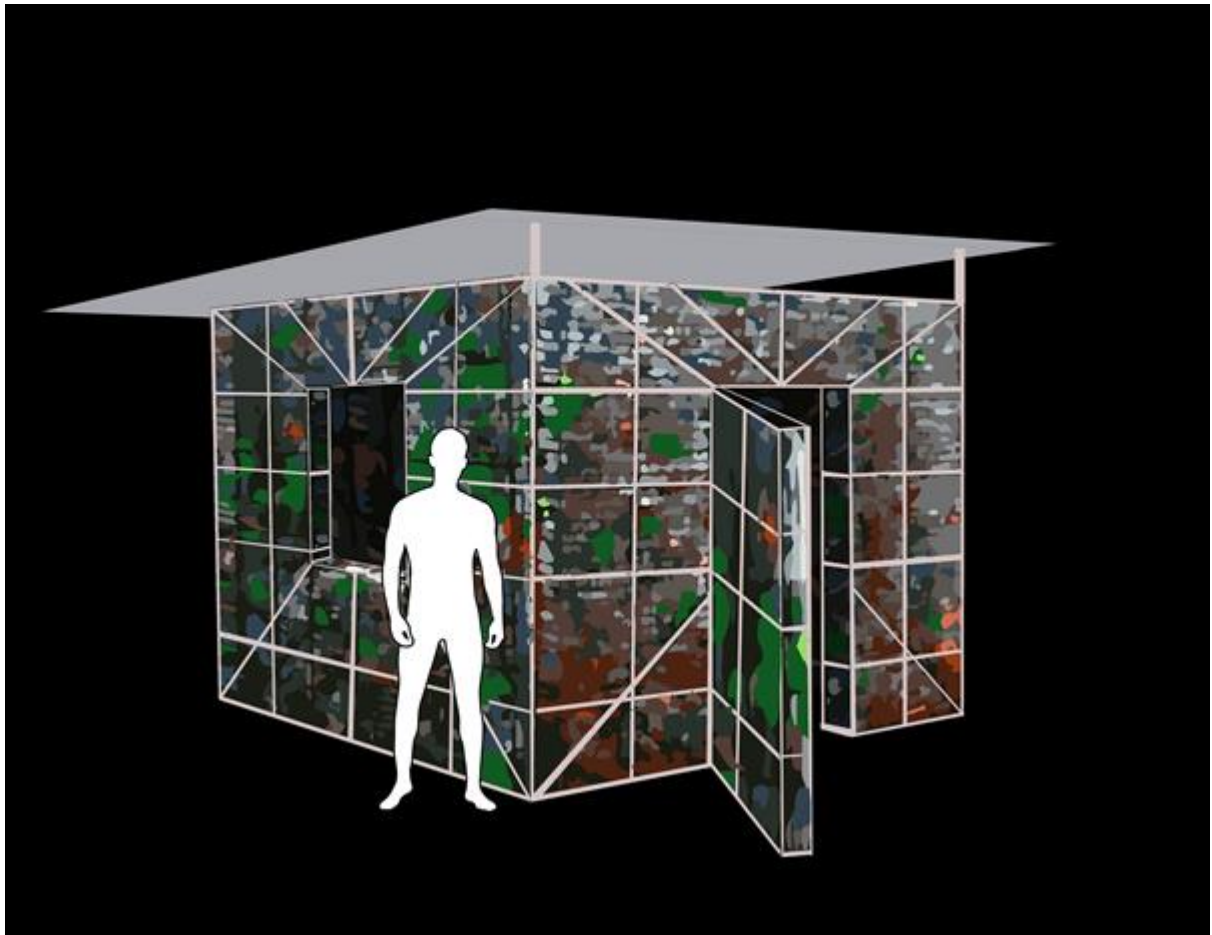


Image 8: An overview of the size difference between a person and the artwork.

## 2. Artwork installation manual

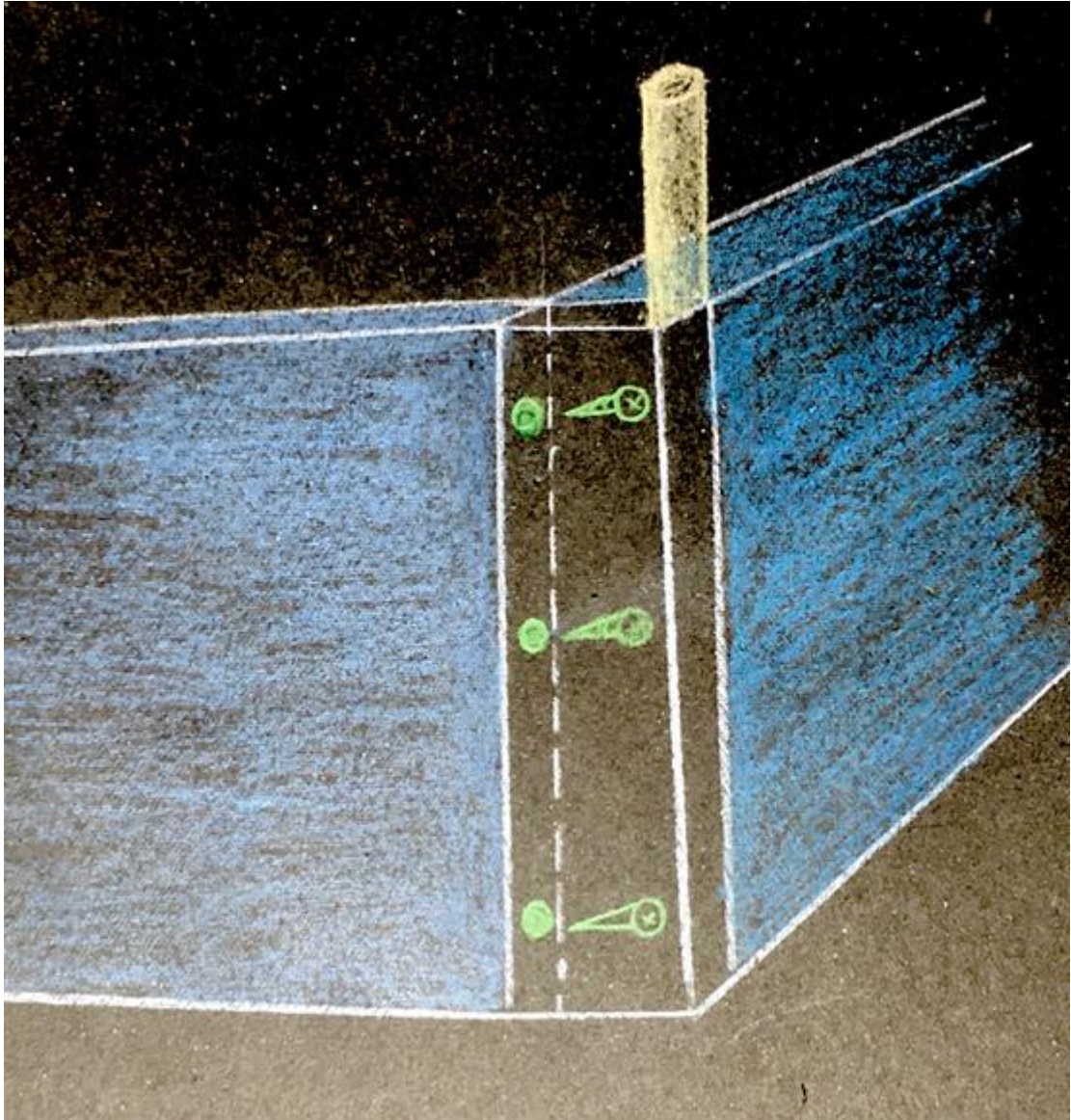


Image 9: Manual installation drawing

The manual installation between the four halves of the body is shown in image 9. In other words, the use of screws is required to attach all four sections together. The reason why the connection was made using a screw was to make it easier to separate it.



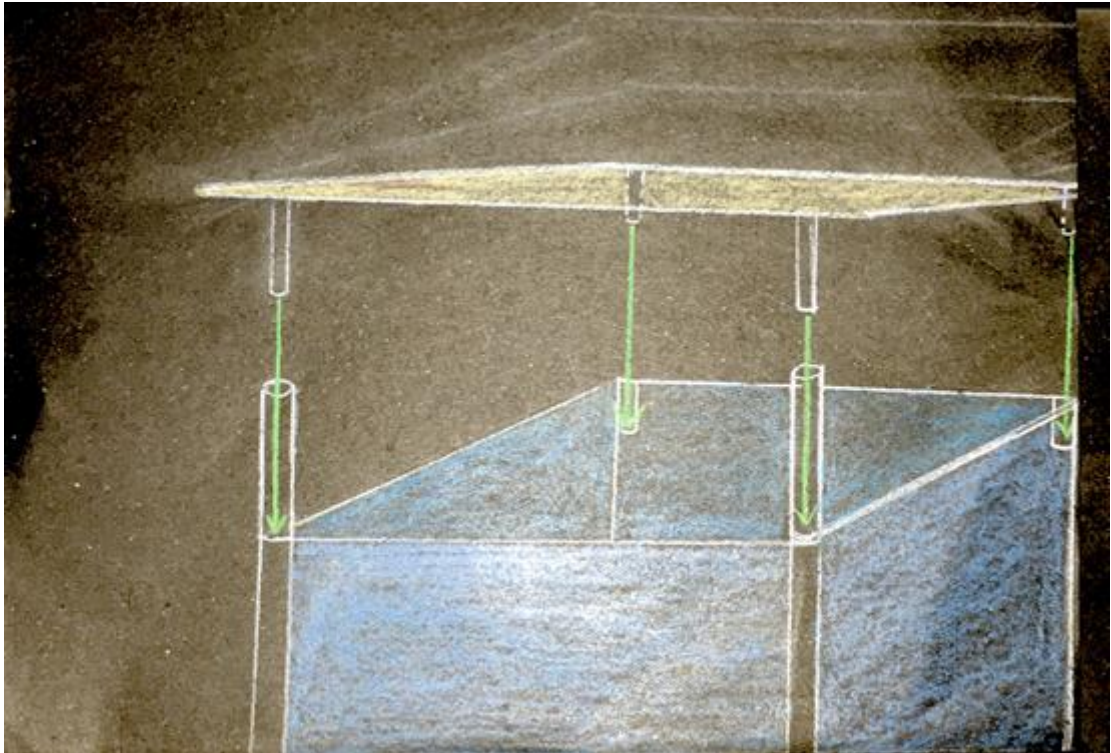


Image 10: Another manual installation drawing

The manual for connecting the roof and the body is shown in image 10. The roof does have to be slid into the body part. In other words, such parts also can be separated.